

# PLAYBILL®

The Chatham Playhouse  
Chatham Community Players  
Chatham, NJ

The Chatham Community Players  
Our 104<sup>th</sup> Season • 1922-2026

## STAGE KISS

By Sarah Ruhl

OCTOBER 10-25, 2025

The Chatham Playhouse  
23 North Passaic Ave, Chatham, NJ

SUPPORT OUR SPONSORS

# BAUER AUTO SERVICE

*Family Owned & Operated for 55 Years*



**Automotive Diagnostics, Repair,  
Maintenance, Towing & Alignment**



**7 Commerce Street  
Chatham, NJ 07928  
973-635-4800**

Use code:  
**Chatham Theatre**  
at checkout for  
a 5% discount

**All Cars - Pickup Trucks - SUVs - Work Vans - Foreign Cars - Vintage**

[www.BauerAutomotiveService.com](http://www.BauerAutomotiveService.com)

[@BauerAutoService](#)



TOGETHER, WE  
STRENGTHEN OUR  
COMMUNITY!

PROUDLY SUPPORTING  
THE CHATHAM  
PLAYHOUSE



THE CHATHAM CLUB  
FITNESS • SQUASH • LIFE

# ABOUT US



## THE CHATHAM COMMUNITY PLAYERS OFFICERS 2025-2027

President: **Jessica Phelan**  
Vice President: **Sarah Pharaon**  
Secretary: **Geneviève Anderson**  
Treasurer: **Chip Pretera**  
Business Manager: **Tom MacDonald**  
Past President: **Leslie Williams Ellis**

### ***SPECIAL THANKS***

The Library of The Chathams  
St. Paul's Episcopal Church



### **REACHING NEW AUDIENCES**

Our Outreach program brings people without access to live theater to attend Chatham Community Players' performances free of charge, with funding from grants and individual donors who share our vision for a world with unfettered access to the arts. We provide busing and complimentary admission to our partners in youth and family programs, drug and alcohol dependence programs, physical injury rehabilitation, special education, schools, senior citizen homes, and AIDS foundations. For many, this is their first live theatrical experience. Please help support our efforts by recommending groups that might be interested in partnering with us by emailing [Outreach@ChathamPlayers.org](mailto:Outreach@ChathamPlayers.org).



### ***Upcoming on Sundays@7***

**November 16**

**February 15**

**May 17**

**June 28**

***\$10 Suggested donation. BYO snacks.***



Chatham Community Players is committed to making all reasonable efforts to ensure that its facilities, programs and services are accessible to, and usable by, all people, including those with disabilities.

Please ask a staff member for assistance.

**THE CHATHAM COMMUNITY PLAYERS**  
**Proudly Presents**

# **STAGE KISS**

**by Sarah Ruhl**

*Set Design/Construction*  
**ROY PANCIROV**

*Costume Designer*  
**AUTUMN HYUN**

*Lighting Designer*  
**IAN CLARK**

*Sound/Projection Designer*  
**CHRIS ANDERSON**

*Scenic Artists*  
**DEAN SICKLER**  
**JOËLLE BOCHNER**

*Props/Set Decoration*  
**CORINA LUPP**

*Fight Coordinator*  
**STEVE RUSKIN**

*Assistant Director*  
**MISSY RENWICK**

*Intimacy Coordinator*  
**JENNIFER COOPER**

*Original Music by*  
**JOE DeVICO and GABRIELLE WAGNER MANN**

*Stage Manager*  
**GENEVIEVE ANDERSON**

*Producer*  
**GUS IBRANYI**

*Director*  
**GABRIELLE WAGNER MANN**



"*Stage Kiss (Ruhl)*" was originally produced by the Goodman Theatre, Chicago, Illinois on May 9, 2011. Robert Falls, Artistic Director, Roche Schuller, Executive Director. Playwrights Horizons, Inc., New York City, produced the New York premiere of "STAGE KISS" Off-Broadway in 2014. "*Stage Kiss (Ruhl)*" is presented by arrangement with Concord Theatricals on behalf of Samuel French, Inc. [www.concordtheatricals.com](http://www.concordtheatricals.com).

"Some Enchanted Evening," Music by Richard Rodgers, Lyrics by Oscar Hammerstein II. This selection is used by special arrangement with Rodgers & Hammerstein: an Imagem Company, [www.rah.com](http://www.rah.com). All Rights Reserved.

October 10, 11, 17, 18, 24 and 25, 2025, at 8 p.m.  
October 19, 2025, at 3 p.m.

THE CHATHAM PLAYHOUSE  
23 North Passaic Avenue, Chatham, New Jersey

# CAST

## Cast Members

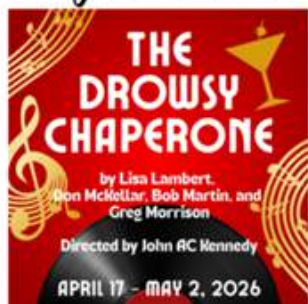
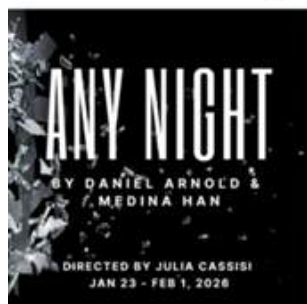
He .....	CARL DIMAGGIO
She .....	CARA TALTY
Director .....	ANDREW MARR
Kevin .....	NICK MATTHEWS
Harrison/Husband .....	BRETT LaROSE
Millie/Maid/Angela .....	ERIN FEITH
Laurie/Millicent .....	MEGHAN COATES

## Production / Creative

Producer .....	GUS IBRANYI
Director .....	GABRIELLE WAGNER MANN
Assistant Director .....	MISSY RENWICK
Stage Manager .....	GENEVIÈVE ANDERSON
Set Design/Construction .....	ROY PANCIROV
Costume Designer .....	AUTUMN HYUN
Props/Set Decoration .....	CORINA LUPP
Lighting Designer .....	IAN CLARK
Sound/Projection Designer .....	CHRIS ANDERSON
Scenic Artist .....	DEAN SICKLER
Scenic Artist .....	JOËLLE BOCHNER
Fight Coordinator .....	STEVE RUSKIN
Intimacy Coordinator .....	JENNIFER COOPER

***The production will be presented in two acts  
with a fifteen minute intermission.***

*Coming this season!*



---

# WHO'S WHO

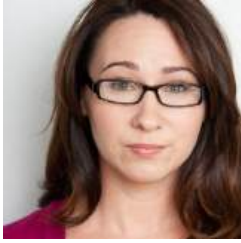
---



## GUS IBRANYI

**Producer**

Gus is happy to be producing *Stage Kiss* for CCP, having previously served as Assistant Producer for *Home, I'm Darling*. Gus also served as Assistant Director for CCP's recent production of *Nine*. Onstage at CCP, Gus has been seen in *Angels In America Part One: Millennium Approaches*, *August: Osage County*, *The Normal Heart*, and *Spamalot*.



## GABRIELLE WAGNER MANN

**Director**

is thrilled to be back at CCP after directing *The Flick* in 2023. CCP credits: *Lifespan of a Fact* (Emily) and *Jersey Voices* 2023 (actor and playwright). Other credits include: *Mad Men*, *Wilfred*, *Firefly*, *Strong Medicine*, *Stonerville*, *Monstrum*, and more. On stage, she was an Ovation nominee for the world premier of *DIVORCE! the musical*, and received a Garland nod for Best Lead in a Musical as Polly Peachum in *The Threepenny Opera*. Other fave roles: *A Ring in Brooklyn* (Gina), *The Most Happy Fella* (Rosabella), *Suburbia* (Sooze), *Prelude to a Kiss* (Rita), *Cabaret* (Sally). As a writer, her pilot *All In* won her the 2025 NJ Council for the Arts Fellowship (for \$17K!) Her musicals, *City of Light* and *iWish*, play *Pot Odds*, and many short plays have been produced all over the country. Gabi holds a BA in Theatre (Smith), an MFA in Playwriting/Screenwriting (PPU), sings with Christmas Matters Holiday Carolers and lives in Summit with hubby, two sons and one large, sweet dog.



## CARL DiMAGGIO

**as He**

Carl is thrilled to be returning to CCP for his second show. His previous performances include *Reefer Madness* (Jesus/Jack) and *A Christmas Carol* (Gentleman # 1). He would love to thank his sister, brother and their families but most of all his mother for the support and love. Special shout out to his dogs, Emma and Jackson.



## CARA TALTY

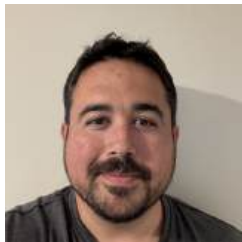
**as She**

Cara is excited to return to the Chatham Playhouse where she has been seen in *Jersey Voices* (x3) and *A Christmas Carol*. Other local theater credits include *Dinner with Friends*, *Five Lesbians Eating Quiche*, *Living Out*, *Baby*, *Closer Than Ever*, *Brooklyn Boy* and *Five Women Wearing the Same Dress*, among others. Thanks to the family for making this possible!

---

# WHO'S WHO

---



## ANDREW MARR

*as Director*

This is Andrew's fourth production after moving to NJ in 2021. He previously starred in *Fat Pig* (Tom) and *Jersey Voices* (William), CCP, and *Dracula: A Feminist Revenge Fantasy...Really!* (Dracula), Chester Theatre, and previously played in *God of Carnage* (Michael) in Pensacola, FL. He thanks his two kids for their love and support as he continues to go play pretend.



## NICK MATTHEWS

*as Kevin*

Nick is in his second production at CCP. Previous credits include *Jersey Voices* (Prometheus). He would like to thank his fellow castmates, both his directors, Chatham Community Players, and all of you.



## BRETT LaROSE

*as Harrison/Husband*

At CCP, Brett appeared in *All My Sons* and *Six Degrees of Separation* directed by Robert Pridham, and *The Complete Works of William Shakespeare (abridged)*. He resides in New Providence and studied acting in NYC.



## ERIN FEITH

*as Millie/Maid/Angela*

Erin is excited to return to CCP, previously appearing in *Jersey Voices* (Jude; Girl) and *Steel Magnolias* (Annelle). Past roles include: *The Moors* (Moorhen) at Wharton Community Players, *Black Coffee* (Lucia) at Lord Stirling Theater Co. and *Fools* (Sophia) with Stony Hill Players. Thanks to Gabi, Missy, Gus and the entire cast/crew, as well her family for their support!



## MEGHAN COATES

*as Laurie/Millicent*

Meghan is thrilled to be a part of her first show with Chatham Community Players! Favorite previous credits include *The Plot* (Donna) and — another Sarah Ruhl piece! — *Dead Man's Cell Phone* (Jean) at Chester Theatre Group, and *Middletown* (Mrs. Swanson) at Villagers Theatre.

---

# WHO'S WHO

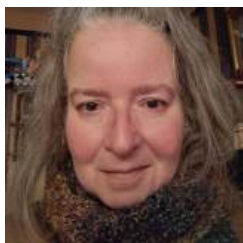
---



## MISSY RENWICK

*Assistant Director*

Missy is an actor and writer and is excited that *Stage Kiss* is her first production credit. Select acting credits include *Agnes of God* (Agnes) at Summit Playhouse; *Anything Goes* (Bonnie) at Trilogy; *Nine* (Carla) at CCP; *Something Rotten* (Portia) at Plays in the Park; *Into The Woods* (Cinderella) at Chester; and *A Christmas Carol* (Christmas Past) at CCP.



## GENEVIÈVE ANDERSON

*Stage Manager*

Geneviève's stage manager credits include ...*Charlie Brown*, *Sideways*, *The Flick*, *Tuck Everlasting*, *A Midsummer Night's Dream*, *Godspell*, and *The Crucible* at CCP; *Hair* (ASM), *La Cage aux Folles*, and *Dames at Sea* at 4th Wall. Active at CCP since childhood, she is a behind-the-scenes jack-of-all-trades currently serving as Secretary on the Board of Trustees.



## AUTUMN HYUN

*Costume Designer*

This is Autumn's debut with CCP and she has been looking forward to collaborating with this company on this fun production. Her previous work includes costume design for *Beauty and the Beast*, *Jesus Christ Superstar*, *Man of La Mancha*, and *Tchaikovsky* (an original play), as well as hair and makeup design for *Is He Dead?* and *No, No, Nanette*.



## IAN CLARK

*Lighting Designer*

Ian is a writer, director, and lighting designer recently graduated from Rutgers University. Previously, Ian has lighting designed for productions of *tick... tick... BOOM!* and *God of Carnage*, as well as directing a production of *Natasha, Pierre & The Great Comet of 1812*. He is proud to be part of his first show with Chatham Community Players.



## CHRIS ANDERSON

*Sound/Projection Designer*

Chris started volunteering with The Chatham Community Players in 1992, and has been a part of over 28 shows here, usually off stage, often seen as Front of House, Ushering or Sound Design. He is beyond happy to be a part of this production and sends a stage kiss to YOU for attending.

---

# WHO'S WHO

---

## CORINA LUPP

*Props/Set Decoration*

Corina is excited to be part of another CCP production. She has helped with props at SPH, and graphics and backstage at CCP. When not playing with props, she works as a book designer. She thanks Carol, Chris, and José for their help! And thanks to everyone who contributed a prop—and to those who handled their props with care. Congrats to the talented cast and crew!



## DEAN SICKLER

*Scenic Artist*

Dean has beaten up, distressed, aged, taped, painted, glazed and plastered dozens of sets at CPP since 1998. He comes from a career of decorative painting (retired) and now enjoys playing pickleball, guitar, cooking and connecting with family.



## JOËLLE BOCHNER

*Scenic Artist*

Joëlle is in her 27th season with CCP, where she has acted, stage managed, propped, produced, gardened, cleaned, trusteeed, woodpecked, and painted. Do you need a great circle of creative friends? Volunteer with us - we'd be delighted to have you!



## STEVE RUSKIN

*Fight Coordinator*

Steve recently did fight choreography for *Tape* (Chatham), *Dracula: A Feminist Revenge Fantasy*, *Really* (Chester), *Of Mice And Men* (Montville) and *Shawshank Redemption* (Somerset). He co-produced and designed the sets for the previous *One Weekend Only* shows at Chatham. Steve teaches Tai Chi and Wing Chun Kung-Fu.

### **And here's everyone else who helped!!!!!!**

Box Office, KATHY REX, AMY NAUTA; Casting, GUS IBRANYI;  
Front of House, BOB DENMARK, LISA FLAVIN, ED WHITMAN;  
Graphic Designer, CORINA LUPP;  
Interns, MIKAIL HASSAN, MIA RIVERA;  
Photography, CHRISTEN SIMMONS SNYDER;  
Playbill, KATHY REX, CHIP PRESTERA;  
Publicity, CHRIS FURLONG, CHIP PRESTERA

***Become a Subscriber to our Newsletter!***  
***Follow CCP on Facebook and Instagram!***  
***Visit [ChathamPlayers.org](http://ChathamPlayers.org)***

---

# ACKNOWLEDGMENTS

---

## BECOME A CONTRIBUTOR TO THE CHATHAM COMMUNITY PLAYERS!

*CCP is a tax-deductible 501(c)(3) organization.*

*Please remember to ask your employer about matching gifts!*

*We appreciate these generous and sustaining donations.*

### **FOUNDERS' CIRCLE**

Bill & Mary Cosford    Andrea Herbert  
Mike & Margaret Nicolais    Vincent M. Smith

### **TRUSTEES' CIRCLE (\$1,000 - \$5,000)**

Campbell Family Foundation, Inc.    Joëlle Bochner  
Donald Hall    Leslie Williams Ellis    Ed Whitman

### **BENEFACTOR (\$500 - \$999)**

Joe DeVico    Roy Pancirov    Sarah & Amer Pharaon

### **ANGELS (\$200 - \$499)**

Lois Burns    Corina Lupp    Ed Meade & Jon DeAngelis  
Eric Teschemacher    Kathleen & Anthony Prestera  
Helene Schechter    Andrea Sickler

### **FELLOWS (\$100 - \$199)**

Christine Baird    Susan Brown-Peitz    Nan Canfield  
Constantine Kitsopoulos    Mary Ellen Lenahan    Ariela Halfin  
Judy Martorelli    Kathleen Rex    Allayne & Fred Teschemacher

### **PATRONS (\$50 - \$99)**

Ellen Friedman    Heidi Hart    Judy Leane  
The Maloys    Stella Reynolds

### **FRIENDS (\$25 - \$49)**

Katherine Abbott    Francis Curran    Lisa Flavin    Carol Levin  
Gregory Mantsios    Margaret Lilliu    Jeslyn Wheelless

### **COMMUNITY AND CORPORATE GRANTS**

Bank of NY Mellon Gifts

Chatham Jaycees, Inc.

Hyde and Watson Foundation

Funding has been made possible in part by funds from Morris Arts through  
the New Jersey State Council on the Arts/Department of State and  
Partner Agency of the National Endowment for the Arts

**Help us share  
the magic of live theater  
Donate Today**



*Learn about our 104 year history!  
Visit [ChathamPlayers.org/Past-Seasons](http://ChathamPlayers.org/Past-Seasons)*

---

# OUR VOLUNTEERS

---

At Chatham Players, we offer a fun and welcoming environment!  
Whether you're a seasoned theater pro or just looking to lend a hand,  
there's a place for you behind the scenes or in the spotlight!  
Visit **[ChathamPlayers.org/Volunteer](http://ChathamPlayers.org/Volunteer)**

## CABARET SERIES

Leslie Williams Ellis, Chair  
Joe Elefante  
James Horan  
Ken Magos

## GRAPHIC DESIGN

Corina Lupp

## HISTORIAN

Erin Feith

## PROPS, SET DECORATION

Carol Petersen Saso, Ch.  
Chris & Geneviève  
Anderson  
Corina Lupp

## CASTING

Gus Ibranyi, Chair

## HOSPITALITY

Leslie Williams Ellis

## PUBLICITY

Chris Furlong, Chair  
Chip Prestera, Newsletter  
Social Media:  
Sarah Pharaon  
Jessica Phelan

## CONSTRUCTION, SET

Roy Pancirov, Chair  
Ed Whitman  
Brent Babb  
Alan Ellis  
Bobby Garbo  
Chris Hernandez  
Michael Logue  
Bill Purdy  
Phil Ross  
Gordon Wiener

## HOUSE & GROUNDS

Matt McCarthy

## JERSEY VOICES

Jessica Phelan, Chair  
Aaron Kellner, Co-Chair

## LIGHTING

Ed Whitman, Chair  
Roy Pancirov

## SOUND

Joe DeVico, Chair  
Chris Anderson  
Alan Ellis

## COSTUMES

Fran Harrison, Chair

## NJACT REVIEWERS

Sarah Pharaon  
Jessica Phelan

## SUNDAYS@7

Leslie Williams Ellis  
Gus Ibranyi  
Lynn Langone

## CREW, BACKSTAGE

Rebecca Casey  
Carol Petersen Saso  
Brian Gutierrez  
José Rivera  
Mia Rivera

## OUTREACH

Sarah Pharaon, Chair  
Steve Ruskin

## TECHNOLOGY

Alan Ellis

## FRONT OF HOUSE

Bob Denmark, House Manager  
Lisa Flavin  
Ed Whitman  
Maybelle Lincoln, Staffing  
Leslie Williams & Alan Ellis  
Joëlle Bochner &  
Tom MacDonald  
Cookie Jensen  
Matt McCarthy  
Rachelle Rennagel  
Elizabeth Rogers  
Bob & Hannah Schnell

## PAINTING

Joëlle Bochner, Chair  
Jeff Campbell  
Leslie Williams Ellis  
Corina Lupp  
Dean Sickler  
Scott Tyler  
Gordon Wiener

## THEATER CREATIONS

Scott Tyler

## TICKETS, BOX OFFICE

Kathy Rex, Chair  
Amy Nauta  
Chip Prestera

## GLO-UP GROUP

Sarah Pharaon, Chair  
Leslie Williams Ellis  
Gus Ibranyi  
Matt McCarthy  
Amy Nauta

## PLAY SELECTION

Missy Renwick, Chair  
Alan Ellis  
Gus Ibranyi  
Corina Lupp  
Vincent Macri  
Sarah Pharaon  
Kate Pierce

## TWO WEEKENDS ONLY

Sarah Pharaon, Chair  
Steve Ruskin, Co-Chair  
Joëlle Bochner  
Aaron Kellner  
Ellie Leick  
Anne McCarthy  
Matt McCartney  
Emily Miller

## PLAYBILLS

Kathy Rex, Chair  
Chip Prestera, Co-Chair  
Ellen Gesner  
Corina Lupp

## VOLUNTEERS

Carol Petersen Saso

## WEBMASTER

Chip Prestera

***Enjoy the Show!!***



*Proudly Sponsored by one local Chatham institution to another:*

**Mary Weichert and John Tunny  
Weichert Realtors- Chatham**

**Over 40 years combined real estate expertise**  
*Your local real estate experts*

**Mary Weichert cell - (201) 532-0788**  
**John Tunny cell - (973) 454-0500**

**Weichert**  
**REALTORS®**



**64 Main St. Chatham (973) 635-5000**

**Celebrating 55 years of Community Partnership**